

C3V02... / C3V.00...

CARTRIDGE SOLENOID VALVES 3 WAY 2 POSITIONS



C3V.02... / C3V.00...

"22 W" DC COILS CH. V PAGE 43

STANDARD CONNECTORS CH. I PAGE 19

Max. pressure	210 bar
Max. flow	12 l/min
Max. excitation frequency	2 Hz
Duty cycle	100% ED
Hydraulic fluids	Mineral oils DIN 51524
Fluid viscosity	10 ÷ 500 mm ² /s
Fluid temperature	-25°C ÷ 75°C
Ambient temperature	-25°C ÷ 60°C
Max. contamination level	class 10 in accordance with NAS 1638 with filter β ₂₅ ≥ 75

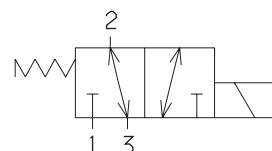
Type of protection (in relation to the connector used)	IP 65
Weight (with coil)	0,30 Kg
Cartridge tightening torque	25 ÷ 30 Nm / 2.5 ÷ 3 Kgm
Coil ring nut tightening torque	7 Nm (0.7 Kgm)

ORDERING CODE

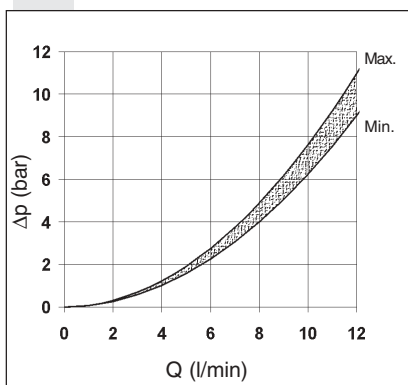
- C3V** Cartridge 3 way / 2 positions
- **** **02** = 22W Coil
00 = 18W Coil (12V only)
- 1C** Schema (see hydraulic symbol)
- C** Seat
- *** **H** = Hirschmann connection
D = Deutsch connection (for 18W coils only)
- *** Voltage (for 22W coil only, Tab. 1)
- **** **00** = No variant
S1 = Without connector (coil)
R1 = Rectifier
- 1** Serial No.

The tests were carried out with the 22W solenoids at operating temperature, with a supply voltage 10% below nominal value and with a 40°C fluid temperature.

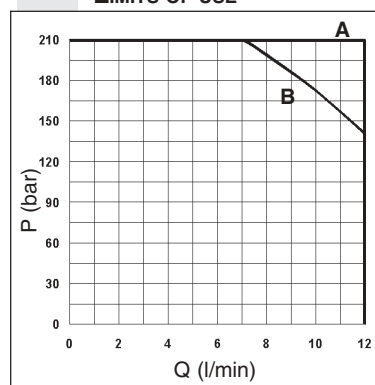
The fluid used is a mineral oil with viscosity of 46 mm²/s at 40°C.



PRESSURE DROPS CURVES A AND B



LIMITS OF USE



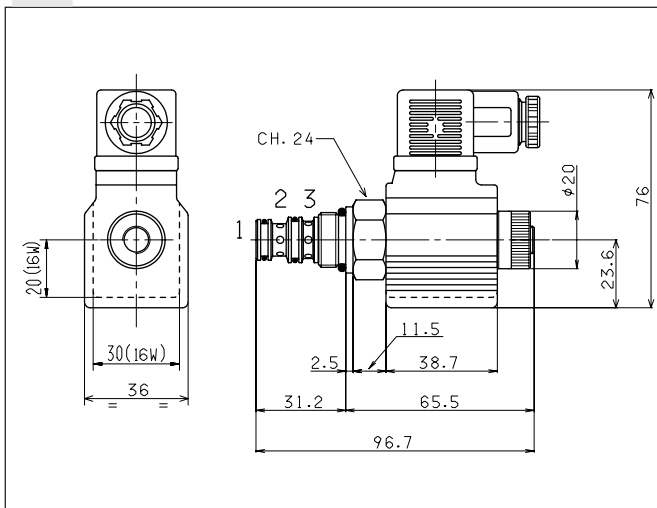
TAB.1 - DC VOLTAGE (22W COIL)

L	12V	115Vac/50Hz 120Vac/60Hz with rectifier
M	24V	
N	48V*	
Z	102V*	230Vac/50Hz 240Vac/60Hz with rectifier
X	205V*	
W	Without DC coil	

* Special voltage

Flux	Curve
1 → 2	A
2 → 1	A
2 → 3	A
3 → 2	B

OVERALL DIMENSIONS



VALVE SEAT - SCALE 2.5 : 1

